

OFFICE:
1836 West 87th Street
Chicago, Illinois 60620
Tel.: (773) 233-8510
Fax: (773) 233-0849
P.O. Box 208561

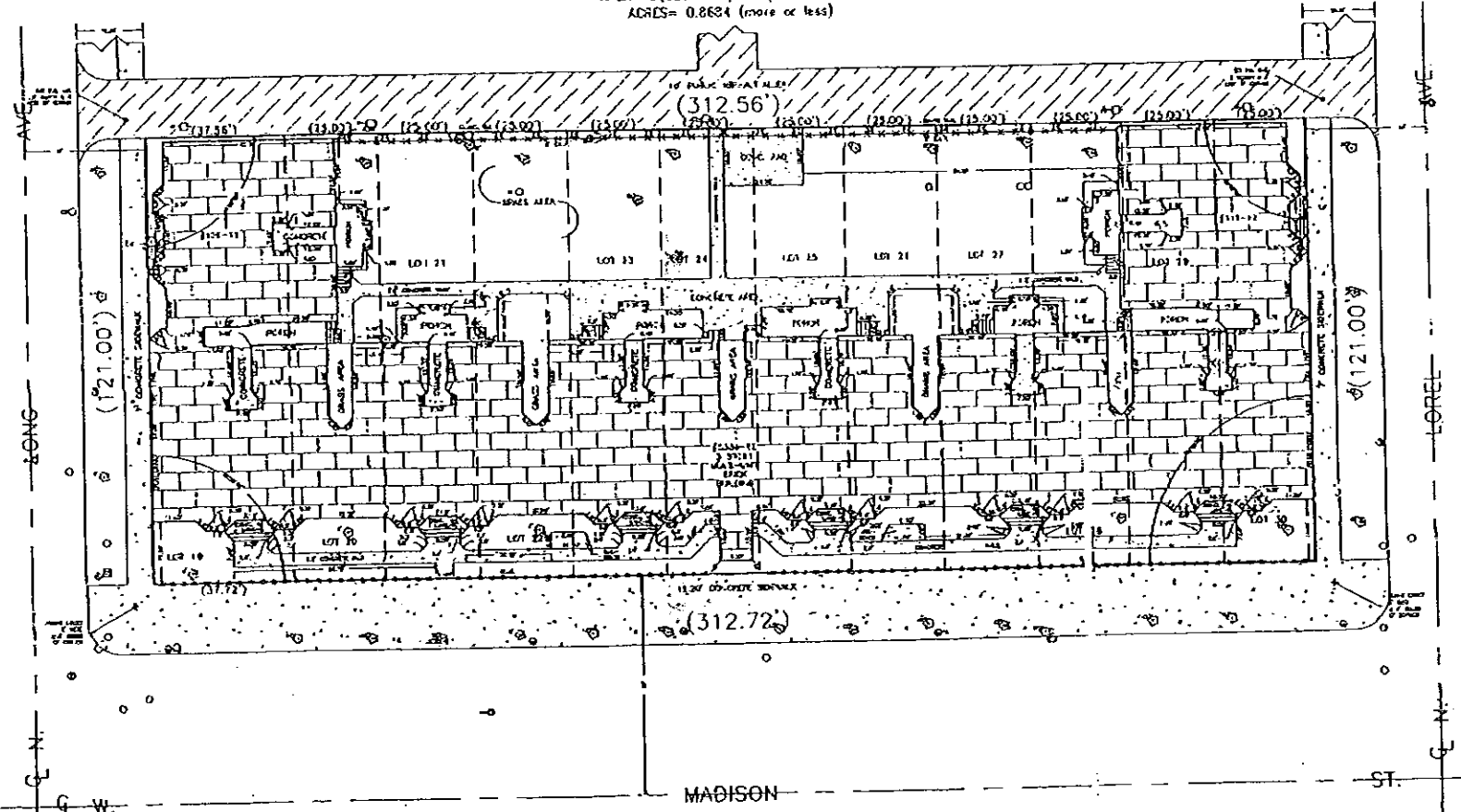
ALTA / A.C.S.M. PLAN OF THE SURVEY

L.R. Pass & Associates P.C. Professional Land Surveyors

PLAT OF SURVEYS
MORTGAGE INSPECTION
CONDOMINIUMS
TOPOGRAPHY
LAND DEVELOPMENTS
LEGAL DESCRIPTIONS

LOTS 19 THROUGH 30, BOTH INCLUSIVE, IN BLOCK 2 IN F.A. HILLS MADISON STREET ADDITION IN THE SOUTHWEST 1/4 OF SECTION 9, TOWNSHIP 39 NORTH, RANGE 13, EAST OF THE THIRD PRINCIPAL MERIDIAN, COOK COUNTY, ILLINOIS.
(COMMONLY KNOWN AS: 5394-62 N. MADISON ST., CHICAGO, ILLINOIS.)
(PROPERTY INDEX NUMBER: 16-09-321-027.)

PERIMETER= 267.28 ft. (more or less)
AREA= 37829.44 sq. ft. (more or less)
ACRES= 0.8684 (more or less)



FLOOD CERTIFICATE:
ACCORDING TO FLOOD INSURANCE RATE MAP OF COOK COUNTY, ILLINOIS OF JUNE 2, 1981, THIS PROPERTY IS IN A MINIMAL FLOODING AREA AND IS DESIGNATED AS "C" ZONE 170074-0665 B

THIS IS TO CERTIFY THAT THIS MAP OF PLAT AND THE SURVEY ON WHICH IT IS BASED WERE MADE IN ACCORDANCE WITH

EUROPEAN LINES AND EASEMENTS ARE



NO.	DESCRIPTION
1	...
2	...
3	...
4	...
5	...
6	...
7	...
8	...
9	...
10	...
11	...
12	...
13	...
14	...
15	...
16	...
17	...
18	...
19	...
20	...
21	...
22	...
23	...
24	...
25	...
26	...
27	...
28	...
29	...
30	...

...

L.R. Pass & Associates, P.C.
Professional Land Surveyors
1836 West 87th Street
Chicago, Illinois 60620 Tel: (773) 233-8514 Fax: (773) 233-0849

Rosemary Triplett

SEP-12-2005 13:29

ISI COMMERCIAL BANK